

PMLP'S INFO...
24/7 Emergency:
(978) 531-5975

Office Information:
201 Warren St. Extension
Phone: (978) 531-5975
Hours: Weekdays
8:30 AM—4:30 PM

Office Closings:
October 10 Columbus Day
November 11 Veterans' Day
November 24-25 Thanksgiving

Payment Options:
PO Box 3199
Peabody, MA, 01961-3648

PMLP mail slot (right side of the front door) at 201 Warren St. Extension. Gate is open 8 AM—11 PM.

Main Library and Torigian Community Life Center during business hours.

24 Hour Drop Box in the parking lot of:
South Branch Library
West Branch Library
City Hall, Chestnut St. side

Website: www.PMLP.com

Manager: Glenn Trueira

Commission Members:
Chairman Robert Wheatley, Thomas D'Amato, Thomas Paras, Charles Bonfanti, and William Aylward

Commission Meetings:
The PMLC is scheduled to meet at 6:30 PM on the 4th Thursday of each month during the school year, with the exception of November & December when the meetings are held on the 3rd Thursdays. Meetings are held in PMLP's McCarthy Auditorium. Please call us at (978) 531-5975 to confirm dates and times.

Light Subjects

Peabody Municipal Light Plant

Fall 2016 Newsletter

Community Owned. Not for Profit. It's Ours.



125 Anniversary Celebration

Thank you to the hundreds of local residents and businesses that attended our 125 Anniversary Celebration on June 18! This community celebration included face painting, music, giveaways, balloons, safety displays and materials, conservation information and materials, 'touch a PMLP truck,' Science Fair projects, and refreshments, as well as a ribbon-cutting ceremony to kick-off the celebration.

Among those taking part in the ceremony were (pictured from left to right) Peabody Mayor Edward Bettencourt, State Representative Ted Speliotis, Peabody Municipal Lighting Commission Chair

Robert Wheatley, PMLP General Manager Glenn Trueira, PMLP Commissioner Thomas Paras, State Representative Tom Walsh, and Community Relations Manager Jennifer Santoro.



Online Customer Account Portal Updates & Information



My Alerts Feature Is Now Available!

The *My Alerts* option available through our Online Customer Account Portal allows our customers to opt into receiving automatic alerts and reminders regarding their PMLP account. As a PMLP customer, you will be able to pick and choose which alerts you want to receive— You can choose to be notified by E-Mail and/or SMS text messages.

PMLP Online Payment Services: Please note that PMLP is not affiliated with ANY third party vendors that offer online payment services (i.e. Doxo, Prism, etc.). In order to ensure the security/privacy of your information, we highly recommend that you only use PMLP authorized payment sites (www.pmlp.com and <https://upnportal.pmlp.com/oscp>). If you have any questions, please call us at 978-531-5975 or email us custserv@pmlp.com.

Examples of the third party online payment service vendors:

<https://www.doxo.com/info/peabody-municipal-light-plant>
<https://www.prismmoney.com/pay/peabody-municipal-light-plant>

PMLP Decreases Third Quarter Bills

Due to lower than expected market energy prices, all PMLP customers will see a decrease in their electrical bill, for comparable usage, for the third quarter (July—September 2016)!



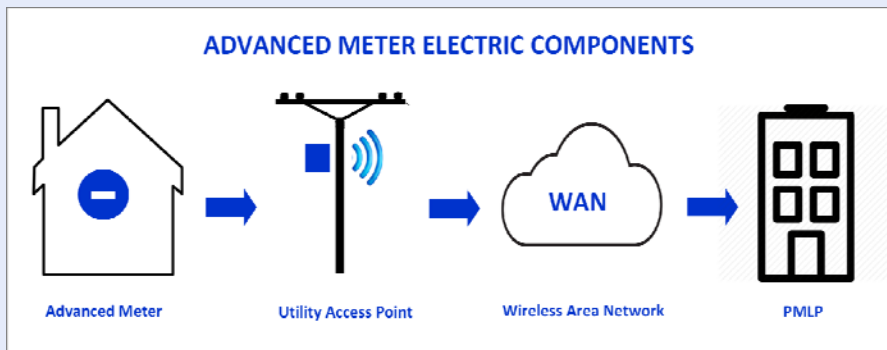


Our Energy Is Getting Brighter: New Advanced Electric Meters Are Getting Installed in PMLP Service Territory!

We are preparing to install advanced electric meters on our customers' homes and businesses throughout our service territory in Peabody and South Lynnfield. This effort is in response to our continuing efforts to provide our customers with the lowest cost of electricity while maintaining a high level of reliability and great customer service. This step toward a more modernized electric system will enable automated meter readings and may enhance our ability to respond to outages faster and more efficiently. Plus, in the future, you will have access to more detailed energy information that will help you better understand your electricity use – which means you can then make informed decisions on how to manage and control your electricity consumption.

Please take a look at some of these Frequently Asked Questions for more information about our Advanced Metering Infrastructure (AMI) Program:

Q. What is an advanced meter? An advanced electric meter is an electronic measuring device that collects electricity usage information and sends that data to the local utility through a secure telecommunications connection.



Q. What if I don't want an advanced electric meter? We have created an Opt-Out Provision for those customers who choose to opt-out from having an advanced electric meter installed on their home or business. This policy can be found by visiting our website at www.pmlp.com/AMI or by contacting us at 978-531-5975.

Q. When will an advanced electric meter be installed on my home/business? We anticipate that your electric meter exchange will be performed sometime in late 2016 or 2017. In the coming months, you will receive a letter that will provide you with more information relating to the replacement schedule and what to expect.

Q. Who can I expect to be performing the exchange of my electric meter? Our staff or its authorized meter exchange vendor, Wellington Energy Inc. shall be the ones performing the advanced electric meter exchange.

Q. I'm concerned about privacy. Are you able to track when my family is home or my business is occupied? No, the advanced electric meter does not provide us with information regarding the occupancy of your home or business – or the activities of those in your home or business. In addition, this meter is able to track your hourly usage but cannot measure the usage of individual appliances or other electrical devices within your home or business.

Q. Will you limit the amount of electricity I am allowed to use? No, we will not limit the amount of power you can use.

For more information about our Advanced Metering Infrastructure Program, please visit our website www.pmlp.com/AMI or call us at 978-531-5975.

PMLP is on Facebook and Twitter...

For Facebook: Visit <https://www.facebook.com/PeabodyLight/> or search Peabody Municipal Light Plant in the search bar when signed into Facebook!

For Twitter: Visit <https://twitter.com/peabodylight> or search Peabody Light in the search bar when signed into Twitter!

Like/follow our pages for important updates and information, including, energy saving tips, outage information, and PMLP special events!

